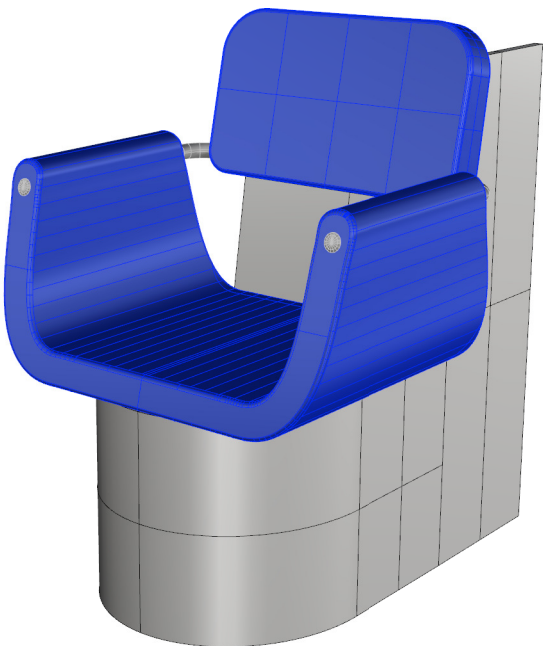
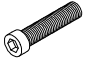
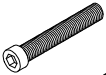
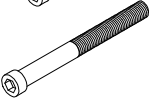



Assembly Instructions

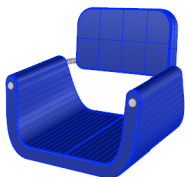


Corsa Dryer Chair
Model #9838

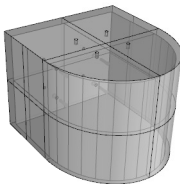
Parts List

A	(4x)		Bolt - M8x35
B	(2x)		Bolt - M8x50
C	(2x)		Bolt - M8x(35+35)
D	(8x)		Lock washer + flat washer

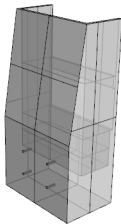
Chair Top (1x)



Dryer Seat (1x)

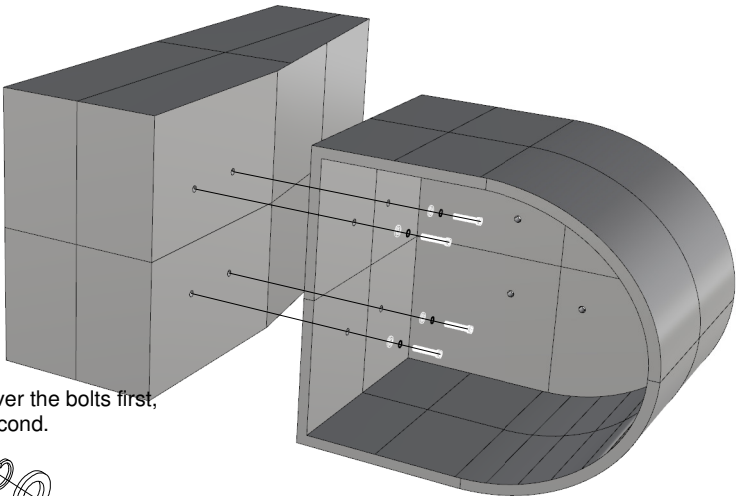


Dryer Back (1x)

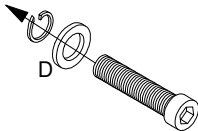


1 - Assembling the dryer base

Using the 4 short bolts (A) and 4 washer sets (D), bolt the dryer seat and back together.



Place the flat washers over the bolts first, and the lock washers second.



2 - Attaching the chair top

Use the remaining bolts and washers to mount the chair top to the dryer base. Use a lock washer and flat washer on each bolt.

The two medium-length bolts (B) screw into the rear of the chair top.

The two long bolts (C) screw into the front of the chair.

